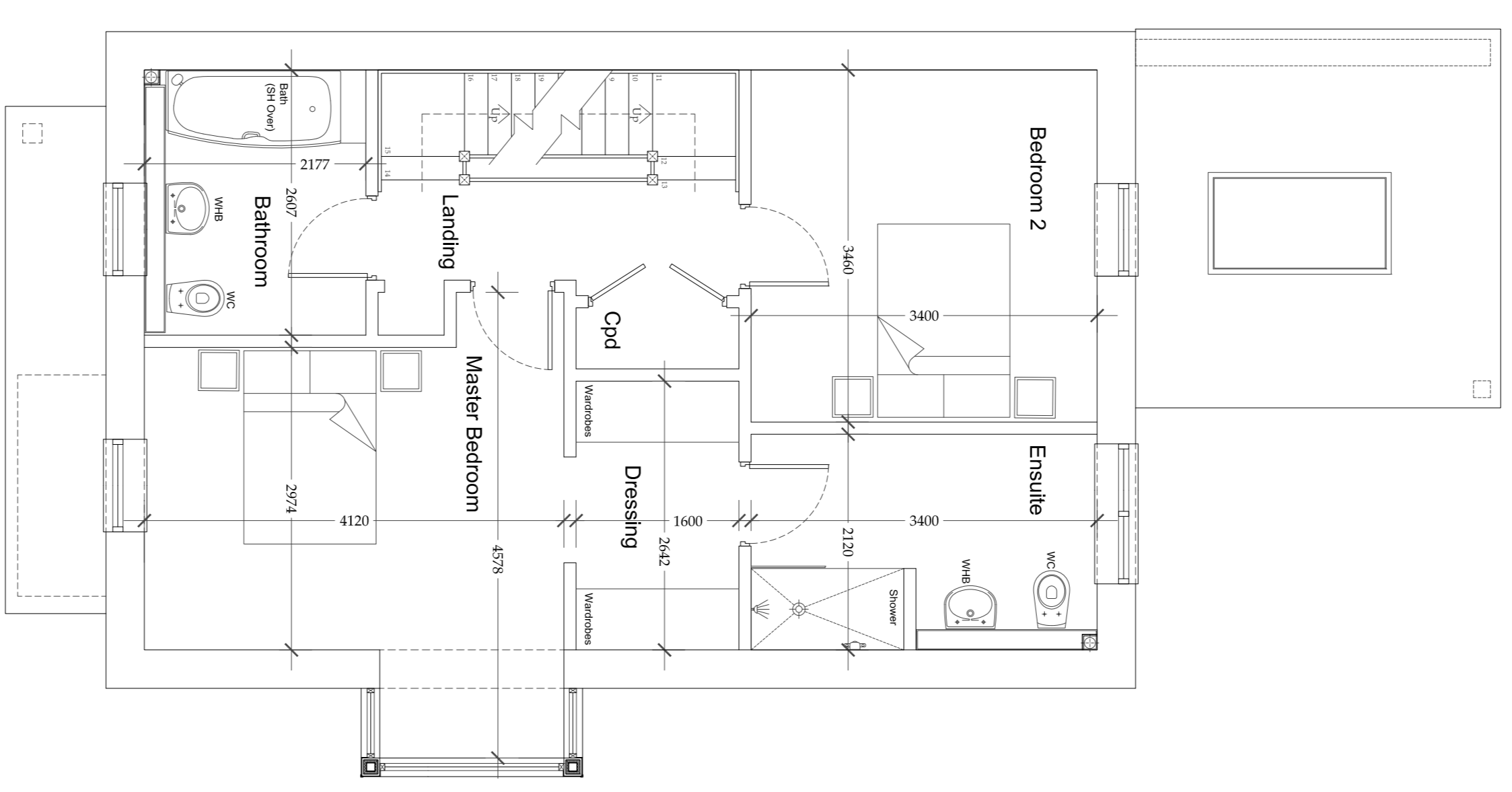
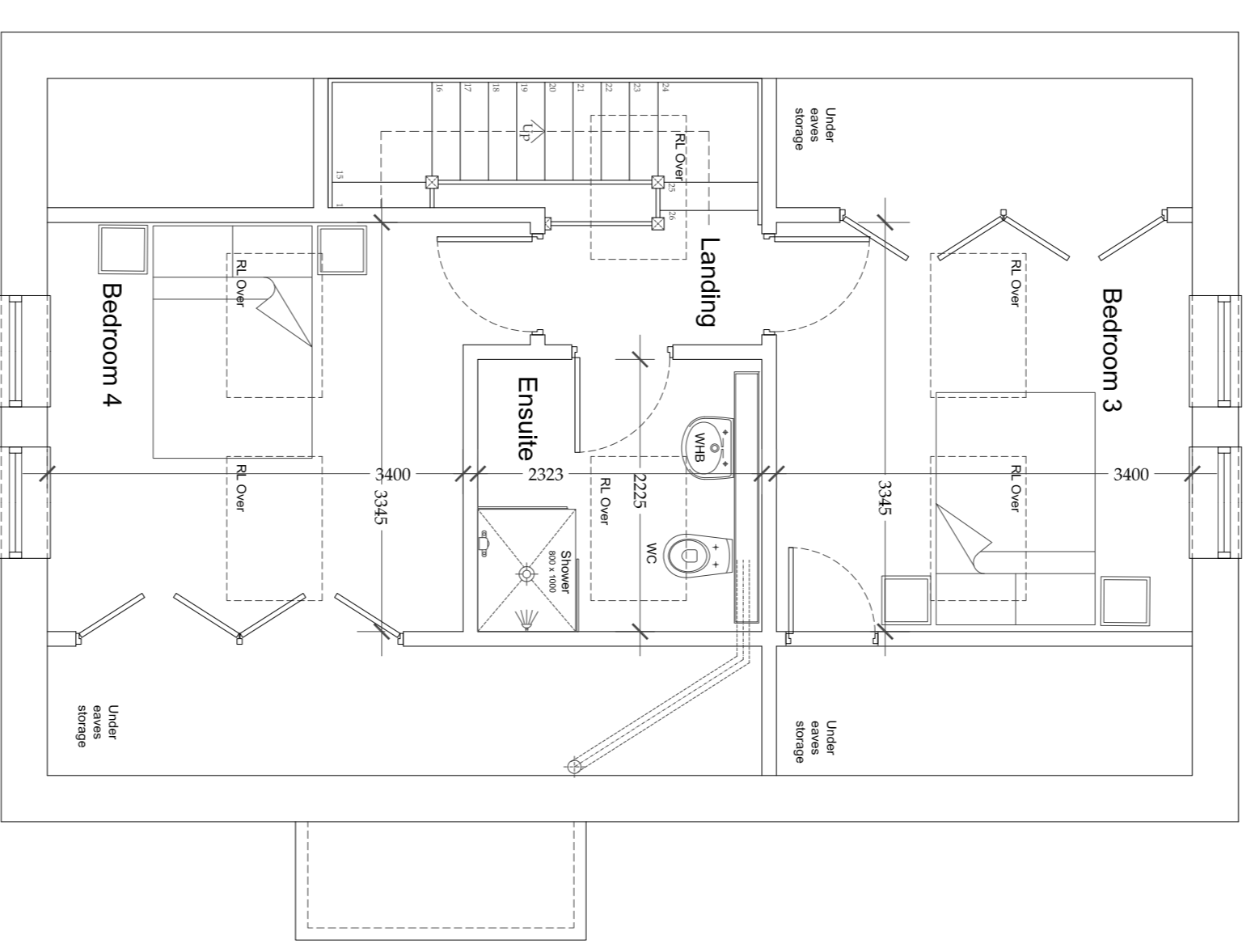


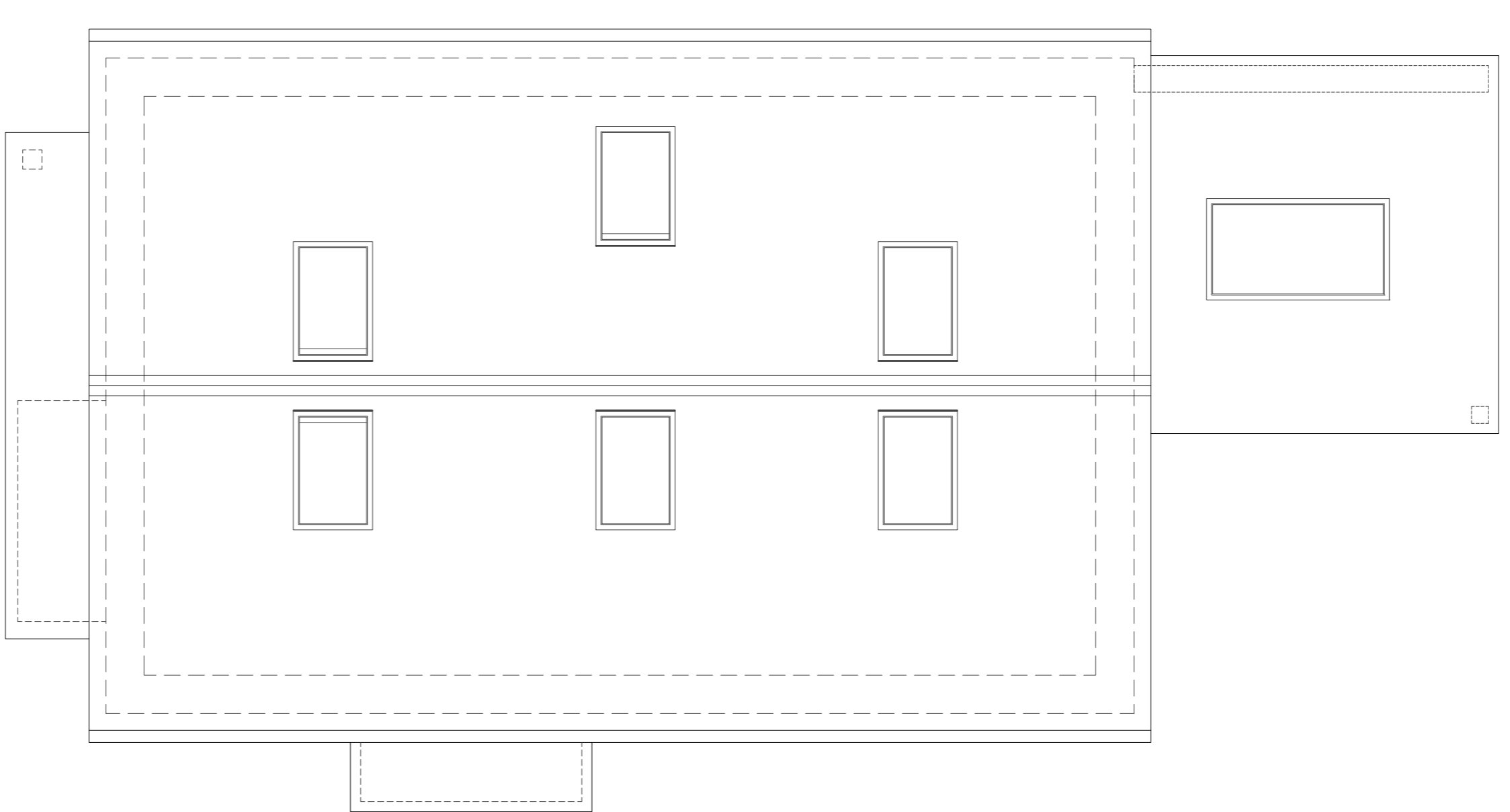
19SASS (GA) 01 Proposed Ground Floor Plan  
57 sq m (Gross Internal)



19SASS (GA) 02 Proposed First Floor Plan  
55 sq m (Gross Internal)



19SASS (GA) 03 Proposed Second Floor Plan  
31 sq m (Gross Internal)



19SASS (GA) 04 Proposed Roof Plan

**Plot 1 |**  
**Four Bedroom Detached Dwelling | 2.5 Stories**  
**Total | 143sq m (Gross Internal)**

Please do not scale from this drawing.  
Any errors, omissions and discrepancies are to be corrected by the contractor and are not to be used. The contractor must check and verify the accuracy of all dimensions and levels on site. The contractor must ensure that all dimensions are correct and that all levels are correct. The contractor must ensure that all dimensions are correct and that all levels are correct. The contractor must ensure that all dimensions are correct and that all levels are correct.

Drawings Status:  Approved

**insight**  
Residential Development  
St Andrew's Road  
South Shields  
Four Bed Dwelling  
Proposed Floor Plans  
Scale: 1:50 (A1 Dwg: 1:20)  
19SASS (GA) 04